

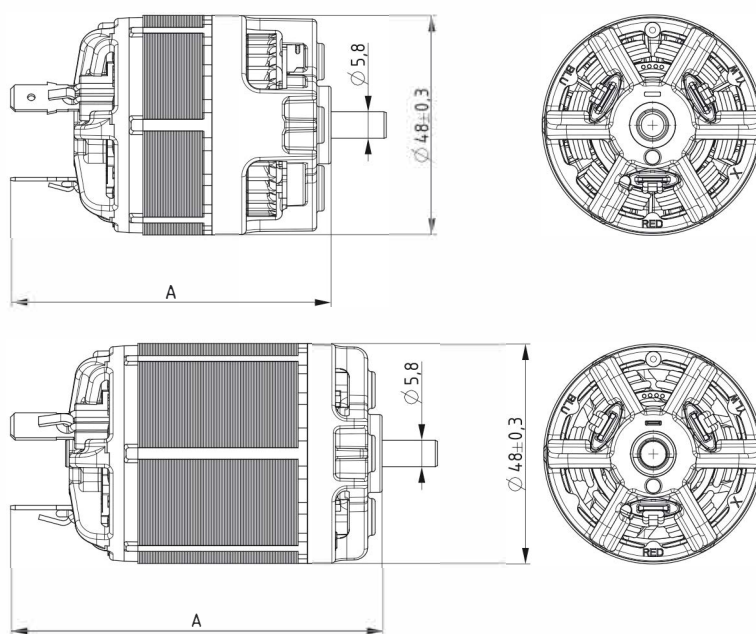
DOMEL

SERIES 720

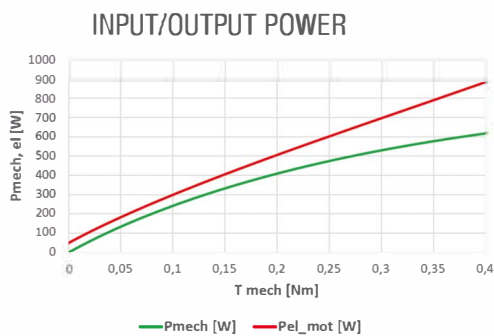
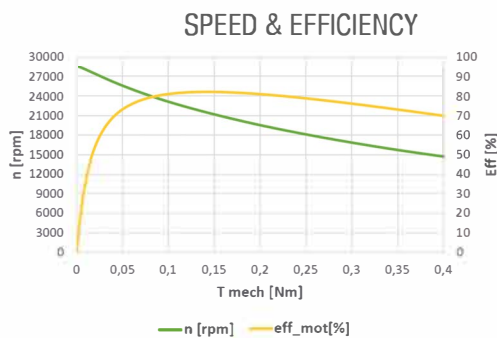
The electronically commutated series 720 motors are designed to be used in battery-driven applications, available in voltages between 12 V and 48 V. In addition to its high efficiency and very high power-to-weight ratio, the EC technology used also enables an exceptionally long service life.

The 720 family of EC motors is designed for a power range of 200 to 2,000 W, and the electronics ensure precise regulation and rapid adjustment to various usage requirements. The motor has a modular design and can be used in various applications. Optionally, the motor can be equipped with Hall sensors and can therefore be used with various types of controllers.

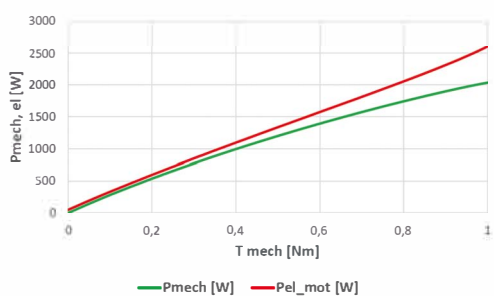
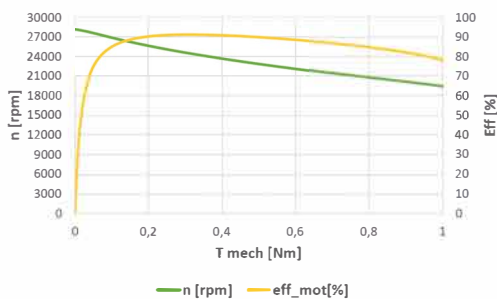
Nominal shaft power: up to 2,000 W
Nominal speed: 5,000 - 35,000 rpm
Nominal torque: up to 1 Nm
Nominal voltage: up to 230V

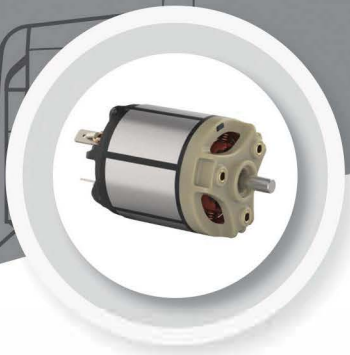


A= 70 mm (stack height 13 mm, weight ~224 g)



A= 92 mm (stack height 35 mm, weight ~474 g)





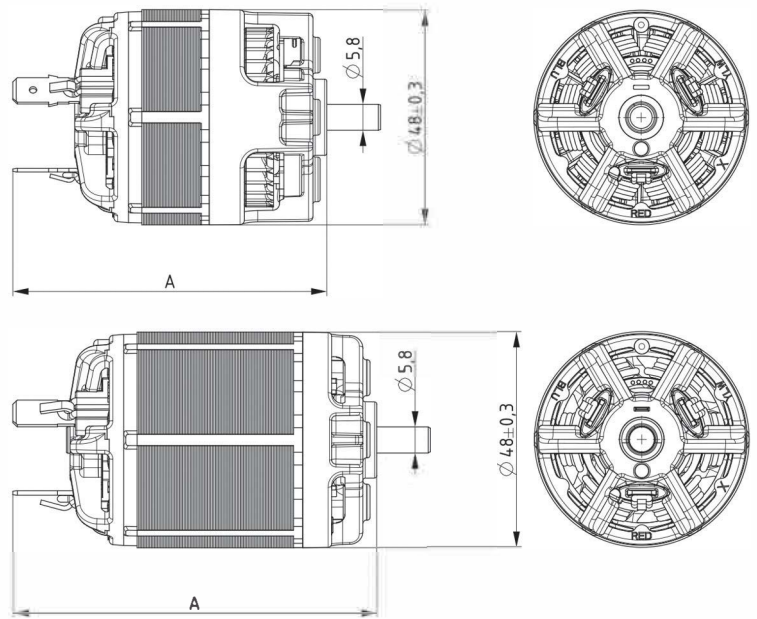
DOMEL

SERIES 720

The electronically commutated series 720 motors are designed to be used in battery-driven applications, available in voltages between 12 V and 48 V. In addition to its high efficiency and very high power-to-weight ratio, the EC technology used also enables an exceptionally long service life.

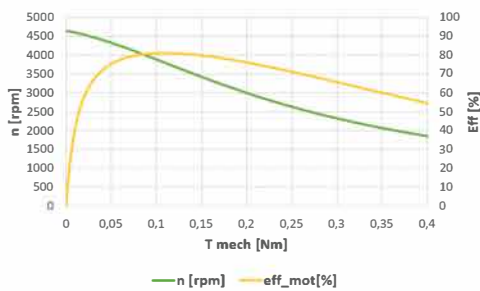
The 720 family of EC motors is designed for a power range of 200 to 2,000 W, and the electronics ensure precise regulation and rapid adjustment to various usage requirements. The motor has a modular design and can be used in various applications. Optionally, the motor can be equipped with Hall sensors and can therefore be used with various types of controllers.

Nominal shaft power: up to 500W
Nominal speed: 1,000- 10,000 rpm
Nominal torque: upto 1Nm
Nominal voltage: up to 230V

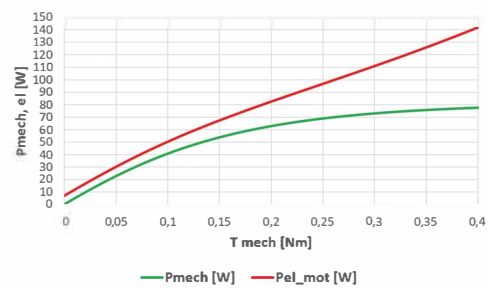


A= 70 mm (stack height 13 mm, weight ~224 g)

SPEED & EFFICIENCY



INPUT/OUTPUT POWER



A= 92 mm (stack height 35 mm, weight ~474 g)

